



## Supplementary Operating Instructions for Air Curtain Equipment

### FST Controller Unit

Translation of the original

Serial Number: \_\_\_\_\_

Year: \_\_\_\_\_

In cases of contact, please quote this number to customer services.



# Operating Instructions FST

The controller unit FST is a 5-stage speed controller that enables the air capacity to be adjusted according to different conditions.

- on/off-switch, switch for different stages
- repair switch
- small wall switch case
- dimensions: depending on rating
- switch for manual/automatic operating mode; automatic features e.g. door contact



ATTENTION

**Please also note the safety instructions in the main operating manual of the air curtain!**

Only sufficiently trained persons who satisfy the requirements of the main operating instructions are allowed to work on the air curtain. The main power supply must be disconnected before starting all work.

---



## Indicating lamps on the controller unit

### Status signal lamp

This indicating lamp signals the operating status of the system, i.e. the motors are supplied with voltage by the speed controller and the system runs at the selected stage.

### Motor malfunction

This indicating lamp signals malfunction of the motor.  
The system switches off automatically.

(Cause:       - motor is defective  
                  - inadmissible heating from outside  
                  - cable disconnected)

The malfunction signal can be reset by switching to stage 0 (reset function).

## Terminals of the air curtain system

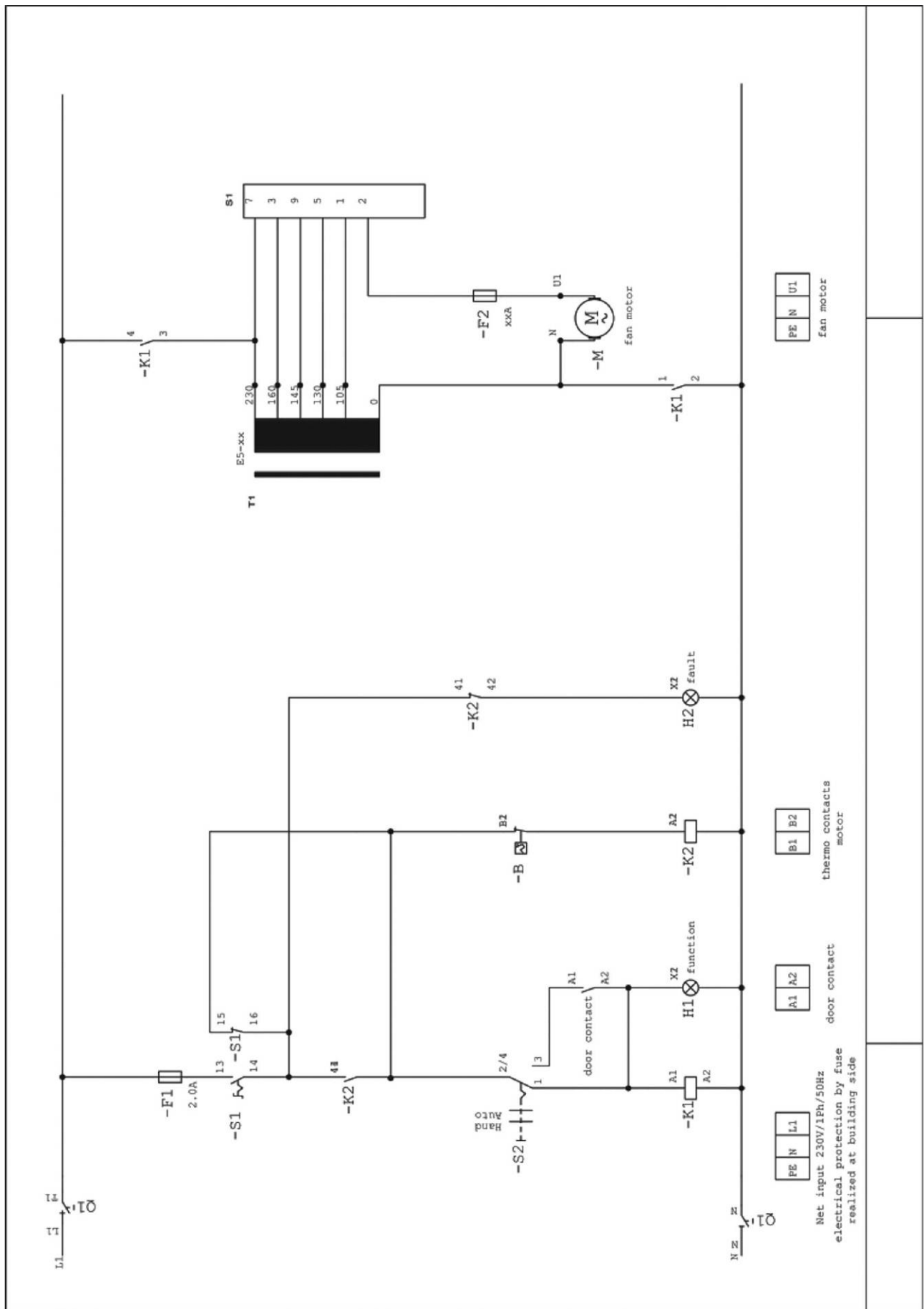
- Terminals U, N, PE:  
Supply voltage of the motors, to be connected with terminals U1, N, PE of the speed controller.
- Terminals 66, 67:  
Thermal contacts of the motors, to be connected with terminals B1, B2 of the speed controller.

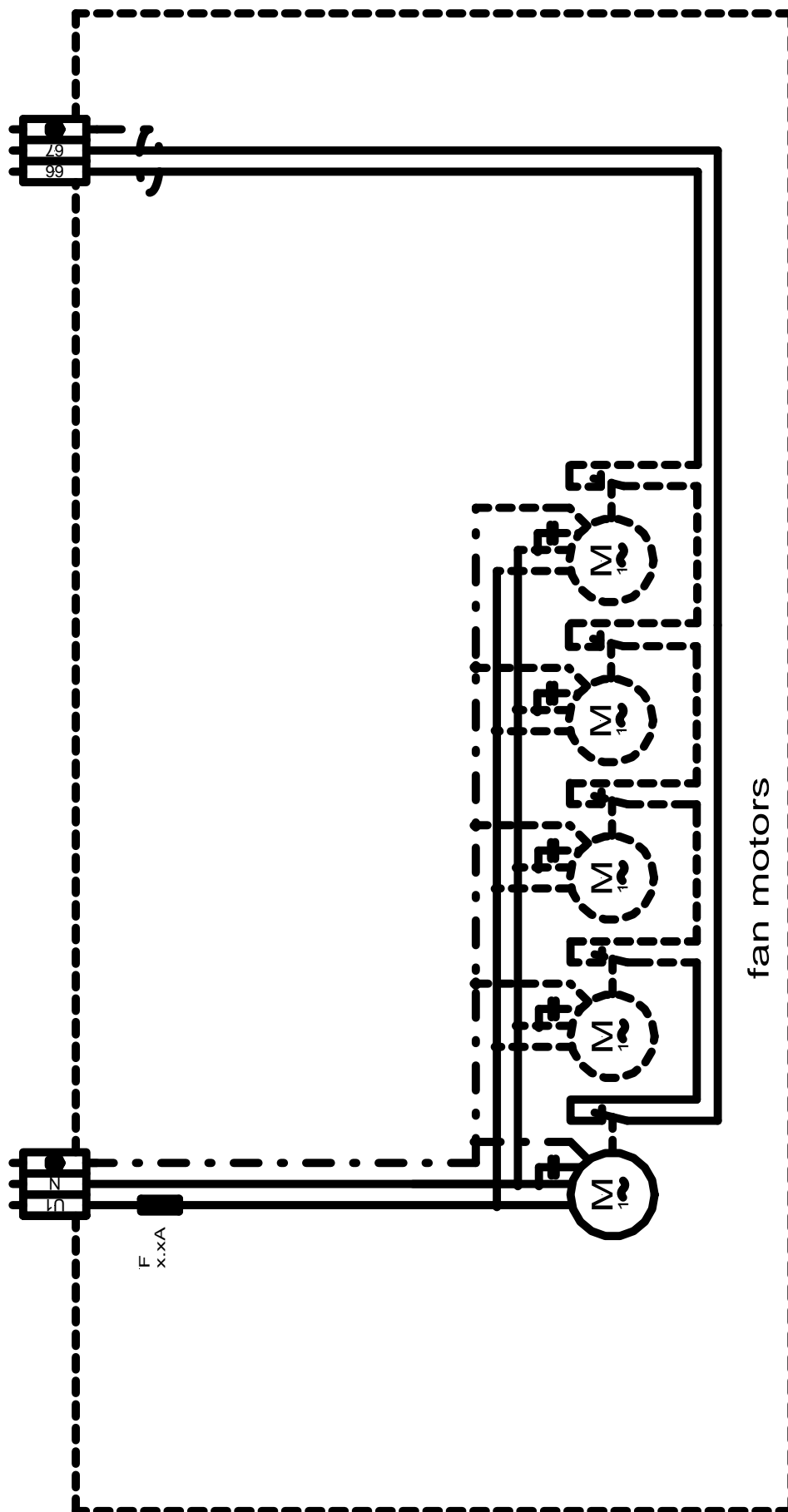
## Terminals in speed controller FST

- Terminals L1, N, PE:  
Connection for supply voltage, to be connected with sub-distribution with separate fusing.
- Terminals U1, N, PE:  
Outgoing line of supply voltage for motors, to be connected with terminals U, N, PE of the air curtain system.
- Terminals B1, B2:  
Input of thermal contacts of motors, to be connected with terminals 66, 67 of the air curtain system.
- Terminal A1, A2:  
Input of potential-free external automatic-contact, e.g. door-contact, clock, room thermostat, etc.

## Available operating modes of speed controller FST

- Safety functions:  
The safety functions are safeguarded at all times, irrespective of the operating mode of the system.
- Switch for on/off and different stages:  
On/off-switch, switch for 5 different stages, adjustable according to different situations and weather conditions.
- Switch for manual-/automatic operating mode:  
In manual operating mode the motors operate permanently in the selected stage, the stage can be selected using the switch for different stages.  
  
In automatic operating mode the motors operate in the selected stage only if the external contact (e.g. door contact), terminal A1, A2 is closed. The stage can be selected using the switch for different stages.







Notes:

[www.teddington.de](http://www.teddington.de)

**Teddington Luftschleieranlagen GmbH**  
**(Teddington Air Curtain Equipment, Inc.)**

Industriepark Nord 42 • D-53567 Buchholz (Mendt), Germany • Tel.: + 49(2683)9694-0 •  
Fax: + 49(2683)9694-50 • Email: [info@teddington.de](mailto:info@teddington.de) • Web: [www.teddington.de](http://www.teddington.de)

