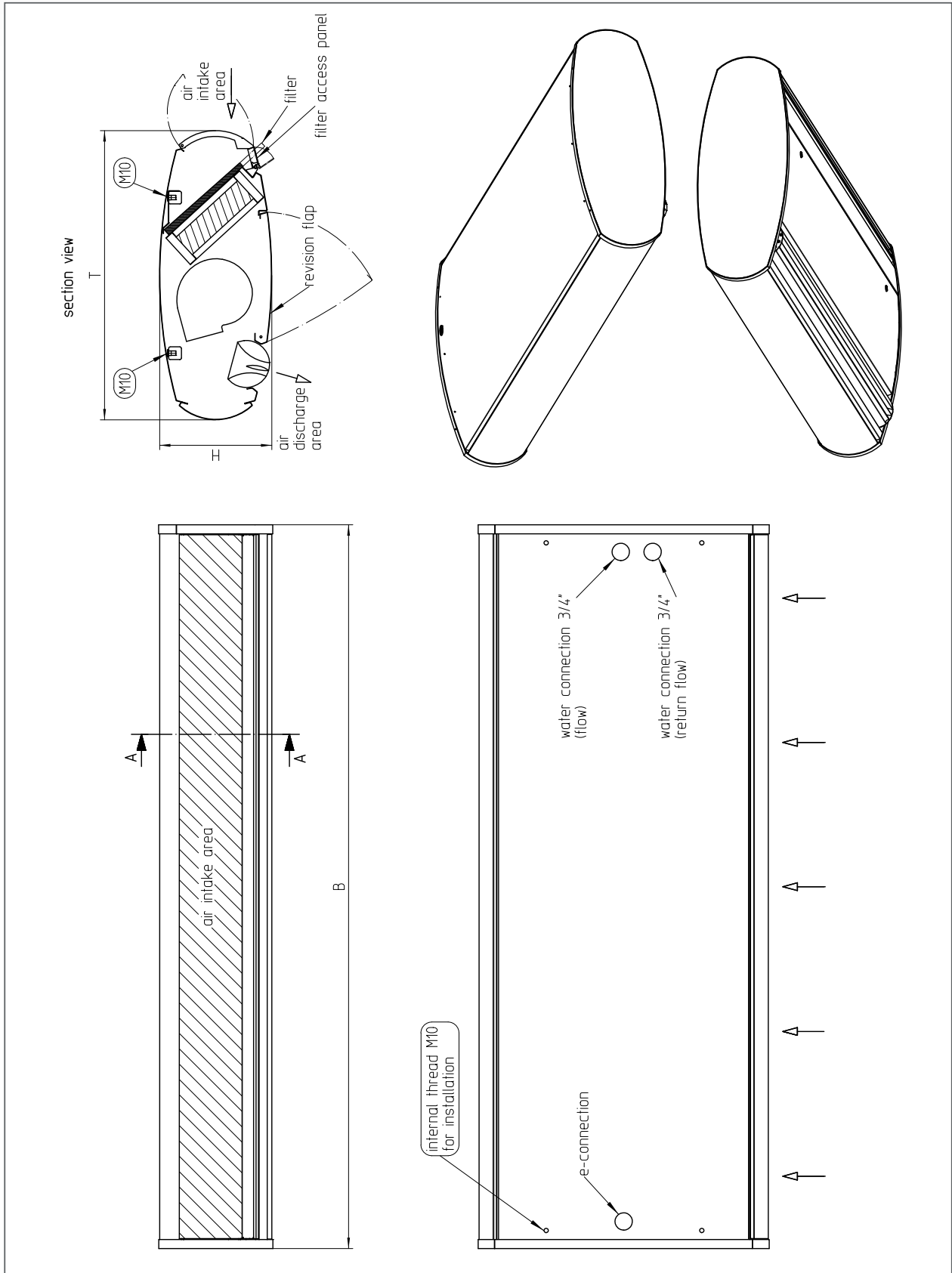


### Technical data

Range		Ellipse 1 flat					Ellipse 2 flat					Ellipse 3 flat				
Width	[cm]	100	150	200	250	300	100	150	200	250	300	100	150	200	250	300
Max. installation height	[m]	2,9					3,3					4,3				
Max. air discharge speed	[m/s]	10,8					12,5					15,5				
Nominal flow rate	[m³/h]	2.100	3.150	4.200	5.250	6.300	2.100	4.200	5.250	6.300	7.450	3.800	5.800	8.500	11.600	14.500
Actual flow rate	[m³/h]	1.400	2.160	2.880	3.600	4.320	1.500	2.800	3.750	4.500	5.250	2.800	4.500	6.000	8.000	9.500
Max. noise level	[dB(A)]	54	56	58	60	61	54	56	58	60	62	57	59	60	61	62
Weight	[kg]	50	72	86	102	130	56	84	110	130	158	140	185	215	250	280
<b>Electrical data</b>																
AC technology	(Maximum output data to determine conductor dimensions. Electrical output data are lower during operation of the device)															
Voltage	[V]	230					230					230				
Output	[kW]	0,46	0,69	0,92	1,15	1,38	0,46	0,92	1,15	1,38	1,61	0,90	1,81	2,71	3,62	4,52
Power consumption	[A]	2,10	3,15	4,20	5,25	6,30	2,10	4,20	5,25	6,30	7,35	4,27	8,54	12,81	17,08	21,35
EC technology	(Maximum output data to determine conductor dimensions. Electrical output data are lower during operation of the device)															
Voltage	[V]	230					230					230				
Output	[kW]	0,34	0,51	0,68	0,85	1,01	0,34	0,68	0,85	1,01	1,18	0,69	1,38	2,07	2,76	3,45
Power consumption	[A]	2,40	3,60	4,80	6,00	7,20	2,40	4,80	6,00	7,20	8,40	3,10	6,20	9,30	12,40	15,50
<b>Technical data of heater battery</b>																
<b>LTHW 70/50 at air intake temperature 20°C and air discharge temperature 37°C (installation form air roll rotating inwards)</b>																
Heat output	[kW]	8,3	12,5	17,0	21,0	25,6	8,7	16,0	21,8	26,2	31,2	17,4	27,3	34,7	49,1	55,5
Flow rate	[m³/h]	0,40	0,50	0,70	0,90	1,10	0,40	0,70	1,00	1,10	1,40	0,80	1,20	1,50	2,20	2,40
Water resistance	[kPa]	1,83	1,87	1,38	1,46	1,56	1,98	2,87	2,14	2,14	2,21	2,32	2,89	2,34	2,69	2,62
<b>LTHW 70/50 at air intake temperature 5°C and air discharge temperature 32°C (installation form air roll rotating outwards)</b>																
Heat output	[kW]	13,8	20,8	28,2	35,8	40,6	14,4	26,6	36,1	44,8	49,4	27,4	44,0	57,6	79,4	91,9
Flow rate	[m³/h]	0,60	0,90	1,20	1,60	1,80	0,60	1,20	1,60	2,00	2,20	1,20	1,90	2,50	3,50	4,00
Water resistance	[kPa]	4,48	4,55	3,38	3,71	3,52	4,86	7,02	5,24	5,50	4,97	5,16	6,72	5,70	6,25	6,36
<b>LTHW 70/50 at air intake temperature 15°C and air discharge temperature 37°C (installation form air roll rotating outwards, covered)</b>																
Heat output	[kW]	11,0	16,6	22,4	28,6	32,4	11,5	21,2	28,8	35,7	39,5	21,8	35,1	46,0	63,3	73,4
Flow rate	[m³/h]	0,50	0,70	1,00	1,30	1,40	0,50	0,90	1,30	1,60	1,70	1,00	1,50	2,00	2,80	3,20
Water resistance	[kPa]	3,00	3,06	2,26	2,50	2,37	3,25	4,72	3,52	3,70	3,35	3,44	4,51	3,83	4,20	4,28
<b>LTHW 60/40 at air intake temperature 20°C and maximum air discharge temperature (installation form air roll rotating inwards)</b>																
Heat output	[kW]	9,5	15,6	20,9	26,6	32,4	10,0	18,7	25,2	31,3	37,3	15,8	27,1	36,9	48,8	59,1
Air discharge temperature	[°C]	39,9	41,1	41,2	41,6	41,9	39,5	39,6	39,7	40,4	40,8	36,5	37,6	38,0	37,8	38,2
Flow rate	[m³/h]	0,40	0,70	0,90	1,20	1,40	0,40	0,80	1,10	1,40	1,60	0,70	1,20	1,60	2,10	2,60
Water resistance	[kPa]	2,41	2,80	2,06	2,28	2,44	2,63	3,92	2,88	3,03	3,10	2,02	2,95	2,69	2,75	3,03
<b>Pipe connections</b>																
Flow/return flow	[Zoll]	3/4	3/4	3/4	3/4	3/4	3/4	3/4	3/4	3/4	3/4	3/4	3/4	3/4	3/4	3/4
<b>Electrical heater (three-step, 400 V, 3 Ph, 50 Hz)</b>																
Step 1	[kW]	3,0	4,5	6,0	6,0	9,0	3,0	6,0	6,0	12,0	12,0	6,0	9,0	12,0	12,0	12,0
Step 2	[kW]	6,0	9,0	12,0	18,0	18,0	9,0	12,0	18,0	18,0	24,0	12,0	18,0	24,0	24,0	24,0
Step 3	[kW]	9,0	13,5	18,0	24,0	27,0	12,0	18,0	24,0	30,0	36,0	18,0	27,0	36,0	36,0	36,0
Δt max.	[K]	17,9	17,4	17,4	18,6	17,4	22,3	17,9	17,9	18,6	19,1	17,9	16,7	16,7	12,6	10,6
<b>Dimensions</b>																
<b>Unit dimensions</b>																
Width "B"	[mm]	1.000	1.500	2.000	2.500	3.000	1.000	1.500	2.000	2.500	3.000	1.000	1.500	2.000	2.500	3.000
Height "H"	[mm]	310	310	310	310	310	310	310	310	310	310	450	450	450	450	450
Depth "T"	[mm]	800	800	800	800	800	800	800	800	800	800	1.130	1.130	1.130	1.130	1.130



**Dimensions – flat model**



### Technical data

Range		Ellipse 1 oval					Ellipse 2 oval					Ellipse 3 oval				
Width	[cm]	100	150	200	250	300	100	150	200	250	300	100	150	200	250	300
Max. installation height	[m]	2,9					3,3					4,3				
Max. air discharge speed	[m/s]	10,8					12,5					15,5				
Nominal flow rate	[m³/h]	2.100	3.150	4.200	5.250	6.300	2.100	4.200	5.250	6.300	7.450	3.800	5.800	8.500	11.600	14.500
Actual flow rate	[m³/h]	1.400	2.160	2.880	3.600	4.320	1.500	2.800	3.750	4.500	5.250	2.800	4.500	6.000	8.000	9.500
Max. noise level	[dB(A)]	54	56	58	60	61	54	56	58	60	62	57	59	60	61	62
Weight	[kg]	50	72	86	102	130	56	84	110	130	158	125	160	200	230	250
<b>Electrical data</b>																
AC technology	(Maximum output data to determine conductor dimensions. Electrical output data are lower during operation of the device)															
Voltage	[V]	230					230					230				
Output	[kW]	0,46	0,69	0,92	1,15	1,38	0,46	0,92	1,15	1,38	1,61	0,90	1,81	2,71	3,62	4,52
Power consumption	[A]	2,10	3,15	4,20	5,25	6,30	2,10	4,20	5,25	6,30	7,35	4,27	8,54	12,81	17,08	21,35
EC technology	(Maximum output data to determine conductor dimensions. Electrical output data are lower during operation of the device)															
Voltage	[V]	230					230					230				
Output	[kW]	0,34	0,51	0,68	0,85	1,01	0,34	0,68	0,85	1,01	1,18	0,69	1,38	2,07	2,76	3,45
Power consumption	[A]	2,40	3,60	4,80	6,00	7,20	2,40	4,80	6,00	7,20	8,40	3,10	6,20	9,30	12,40	15,50
<b>Technical data of heater battery</b>																
<b>LTHW 70/50 at air intake temperature 20°C and air discharge temperature 37°C (installation form air roll rotating inwards)</b>																
Heat output	[kW]	8,3	12,5	17,3	20,8	25,4	8,7	16,0	21,8	26,2	31,2	17,4	27,3	34,7	49,1	55,5
Flow rate	[m³/h]	0,40	0,50	0,80	0,90	1,10	0,40	0,70	1,00	1,10	1,40	0,80	1,20	1,50	2,20	2,40
Water resistance	[kPa]	0,88	0,90	0,96	0,91	0,93	1,98	2,87	2,14	2,14	2,21	2,32	2,89	2,34	2,69	2,62
<b>LTHW 70/50 at air intake temperature 5°C and air discharge temperature 32°C (installation form air roll rotating)</b>																
Heat output	[kW]	12,5	20,7	28,5	34,8	42,3	14,4	26,6	36,1	44,8	49,4	27,4	44,0	57,6	79,4	91,9
Flow rate	[m³/h]	0,50	0,90	1,20	1,50	1,90	0,60	1,20	1,60	2,00	2,20	1,20	1,90	2,50	3,50	4,00
Water resistance	[kPa]	1,83	2,18	2,33	2,24	2,29	4,86	7,02	5,24	5,50	4,97	5,16	6,72	5,70	6,25	6,36
<b>LTHW 70/50 at air intake temperature 15°C and air discharge temperature 37°C (installation form air roll rotating)</b>																
Heat output	[kW]	9,6	16,1	22,3	27,3	33,1	11,5	21,2	28,8	35,7	39,5	21,8	35,1	46,0	63,3	73,4
Flow rate	[m³/h]	0,40	0,70	1,00	1,20	1,40	0,50	0,90	1,30	1,60	1,70	1,00	1,50	2,00	2,80	3,20
Water resistance	[kPa]	1,17	1,41	1,51	1,45	1,49	3,25	4,72	3,52	3,70	3,35	3,44	4,51	3,83	4,20	4,28
<b>LTHW 60/40 at air intake temperature 20°C and maximum air discharge temperature (installation form air roll rotating inwards)</b>																
Heat output	[kW]	5,1	8,8	12,5	16,0	19,6	10,0	18,7	25,2	31,3	37,3	15,8	27,1	36,9	48,8	59,1
Air discharge temperature	[°C]	30,7	32,0	32,7	33,0	33,3	39,5	39,6	39,7	40,4	40,8	36,5	37,6	38,0	37,8	38,2
Flow rate	[m³/h]	0,20	0,40	0,50	0,70	0,90	0,40	0,80	1,10	1,40	1,60	0,70	1,20	1,60	2,10	2,60
Water resistance	[kPa]	0,39	0,51	0,56	0,59	0,61	2,63	3,92	2,88	3,03	3,10	2,02	2,95	2,69	2,75	3,03
<b>Pipe connections</b>																
Flow/return flow	[Zoll]	3/4	3/4	3/4	3/4	3/4	3/4	3/4	3/4	3/4	3/4	3/4	3/4	3/4	3/4	3/4
<b>Electrical heater (three-step, 400 V, 3 Ph, 50 Hz)</b>																
Step 1	[kW]	3,0	4,5	6,0	6,0	9,0	3,0	6,0	6,0	12,0	12,0	6,0	9,0	12,0	12,0	12,0
Step 2	[kW]	6,0	9,0	12,0	18,0	18,0	9,0	12,0	18,0	18,0	24,0	12,0	18,0	24,0	24,0	24,0
Step 3	[kW]	9,0	13,5	18,0	24,0	27,0	12,0	18,0	24,0	30,0	36,0	18,0	27,0	36,0	36,0	36,0
Δt max.	[K]	17,9	17,4	17,4	18,6	17,4	22,3	17,9	17,9	18,6	19,1	17,9	16,7	16,7	12,6	10,6
<b>Dimensions</b>																
<b>Unit dimensions</b>																
Width "B"	[mm]	1.000	1.500	2.000	2.500	3.000	1.000	1.500	2.000	2.500	3.000	1.000	1.500	2.000	2.500	3.000
Height "H"	[mm]	450	450	450	450	450	522	522	522	522	522	750	750	750	750	750
Depth "T"	[mm]	615	615	615	615	615	710	710	710	710	710	1.000	1.000	1.000	1.000	1.000



**Dimensions – oval model**

